



Plumbing Changes to National Restaurant Association Show

Jeff McCaw, SVP Client Relationships



New for 2025

We have heard your concerns and have put together an all-inclusive plumbing package which includes the labor to install and service.



Benefits



- Simplified ordering process



- No surprises in billing/invoicing



- Better labor planning allowing us to have more labor available when needed for exhibitors

Plumbing Package vs Ala Carte

- Package Service includes all materials up to 75' of hose per service as well as fittings and labor to install and dismantle.
- Primary Compressed Air Line Air hook-up, all materials, up to 75' of hose for connection (up to 1" diameter), installation and dismantle labor.
- Primary Water Connection-Outlet Included Waterline hook-up, outlet, all materials, up to 75' of hose for connection (up to 1" diameter), installation and dismantle labor.
- Primary Drain Line Drain hook-up, all materials, up to 75' of drain line (up to 1" in diameter), installation and dismantle labor.
- Gas Outlet Hookup Line Gasline hook-up, all materials, up to 75' of gas line hose (up to 1" diameter), installation and dismantle labor.
- Any questions you have regarding your service while ordering, please feel free to email ChicagoElectrical@freeman.com and a representative will assist you with your concerns.



Plumbing Tips

- If the connection is not an American Standard size fitting (e.g. Metric) additional time and material will be charged.
- Fill and Drains: fill and drain service pricing with a minimum of one (1) hour labor for filling and draining.
- Plumbing services such as anchors, welding, grinding, bottled gases are defined by kit pricing based on Time and Material.
- All other Plumbing Services: Assembly of kitchen equipment such as sinks, faucets, extensive drainage systems made from PVC will be done on a Time and Material basis.



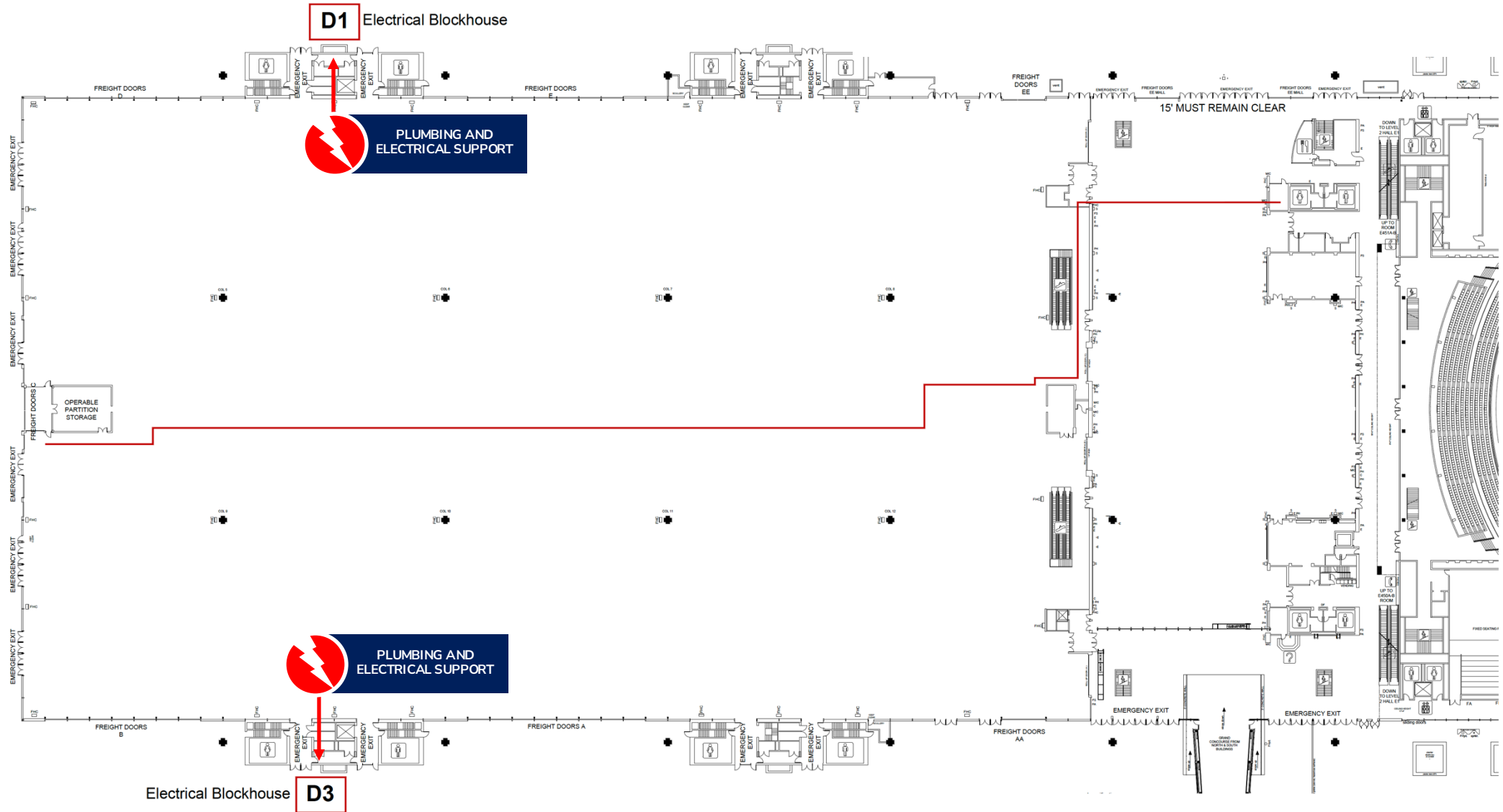
Questions or Need Help When on Site

Each building has account managers that specialize in both plumbing and electrical located within “Blockhouses” or offices right off the show floor. We ask that if you have any needs for plumbing and electrical, you go to these locations first. Floorplans attached for these locations by building.



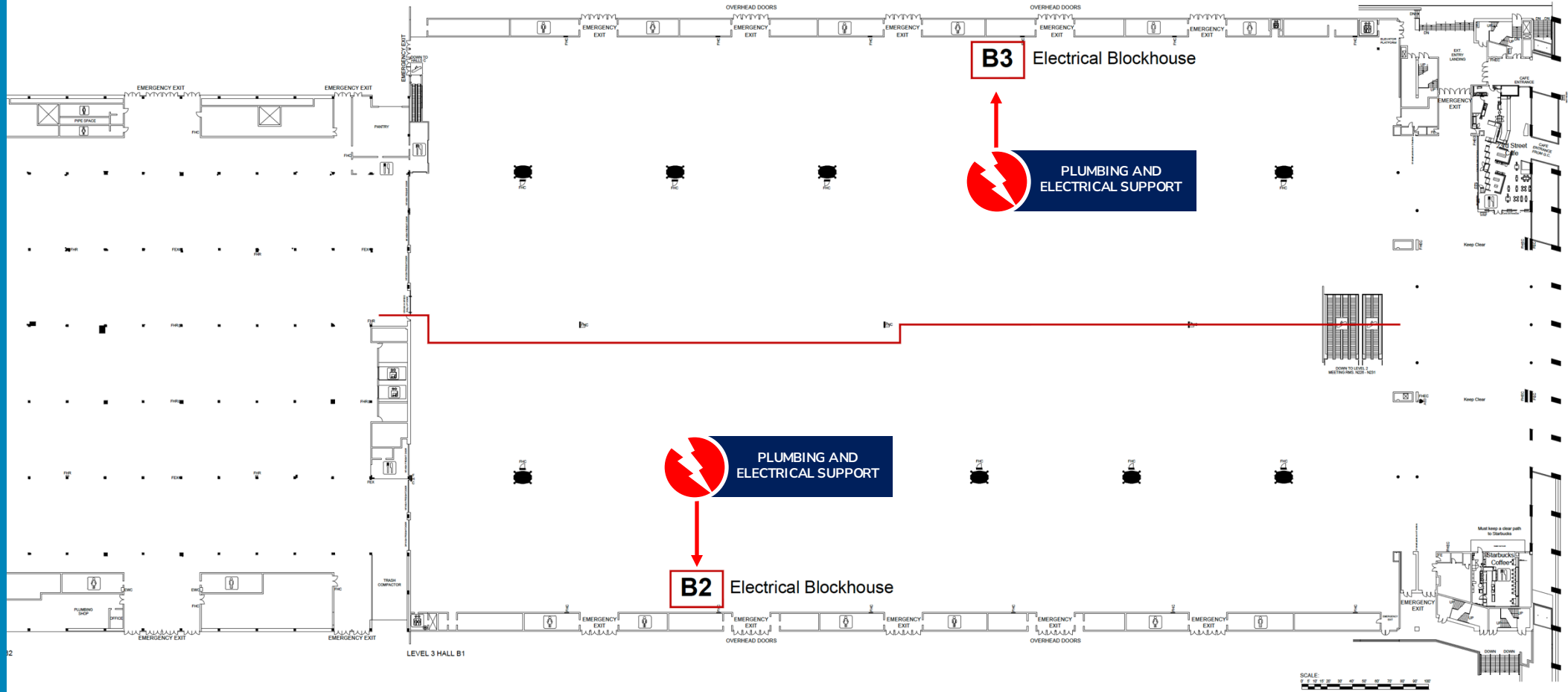
The National
Restaurant
Association Show

McCormick Place
Lakeside BLDG
Level 3
Chicago, IL



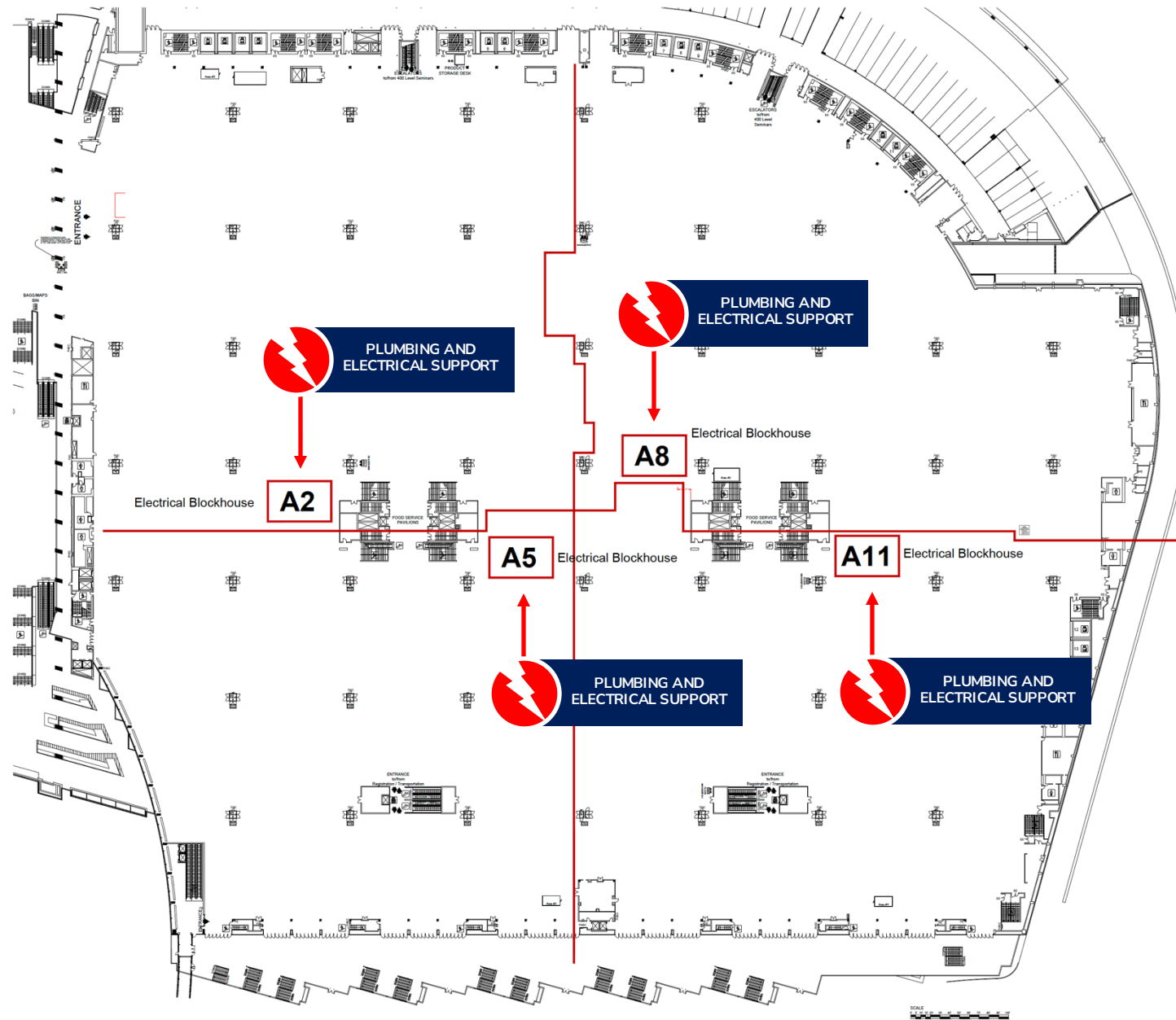
The National
Restaurant
Association Show

McCormick Place
Level 3
North Hall B
Chicago, IL



The National
Restaurant
Association Show

McCormick Place
South BLDG
Level 3
Chicago, IL



Thank you.

Jeff McCaw

SVP Client Relationships

M 407-509-6023

jeff.mccaw@freeman.com

Freeman[™]